



ARTICLE SPECIFICATION

GENERAL SPECIFICATIONS

ARTICLE - NUMBER :71.150.23 12302
DESCRIPTION :Screw Cap with tamper evident ring/vertical dropper assembly
ARTICLE - WEIGHT :appr. 2,7 g
DRAWING DATED :16.06.2006
RESIN :see specification 11.150.23 Dz and 12.117.12 1230
COLOUR :see specification 11.150.23 Dz and 12.117.12 1230
PROCESS OF PRODUCTION :injection moulding/assembled

ARTICLE CONSISTS OF :

PART1:ARTICLE-NUMBER :11.150.23 Dz DESCRIPTION: Screw Cap with tamper ev.ring
PART2:ARTICLE-NUMBER :12.117.12 1230 DESCRIPTION: Vertical dropper

PACKAGING:


The articles are packed into PE-bags, which are closed and placed in carton boxes.
The pallets are wrapped with plastic foil.

Pieces per carton: 5000 pcs. Size of carton : 589x389x330(h)mm

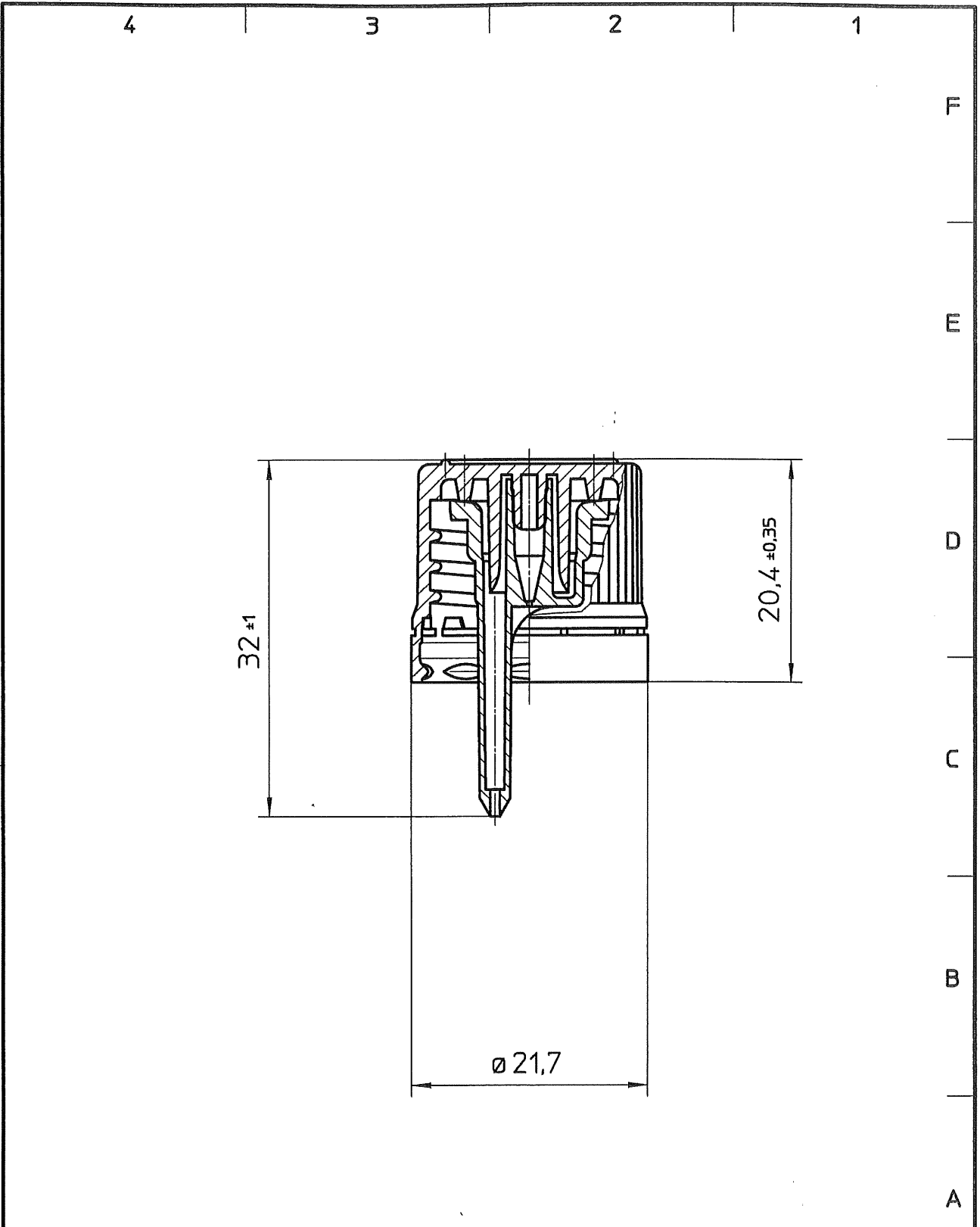
Cartons per pallet: 24 pcs. Size of pallet : 1200x800x2130(h)mm

REMARKS:

ENCLOSED: material-specification technical drawing

Created by :  Date: 14/03/2007

Approved by :  Date: 14/03/2007



Material: PE/PE

Oberfläche/Surface:

Name	OTTO
Datum	16.06.2006
geprüft	OTTO
Maßstab	2:1
Freimaße	DIN 16 901
Ersatz für	Zng.v.
Ersetzt d.	
Blatt	von
Freig.QW-L	28.08.2007 ZO



**KUNSTSTOFFWERK
KREMSMÜNSTER**

71.150.23 12302

Senkrechtropfergarnitur
CAP/VERTICAL-DROPPER ASSEMBLY
GL18 DIN 168
(11.150.23 Dz + 12.117.12 1230)



ARTICLE SPECIFICATION

GENERAL SPECIFICATIONS

ARTICLE - NUMBER :11.150.23 Dz
DESCRIPTION :Screw Cap GL18 with tamper evidence ring
ARTICLE - WEIGHT :appr. 2,1 g
DRAWING DATED :06.04.2006
RESIN :HDPE with EP-compliance
(for example: Purell ACP 6541A)
COLOUR :white
black
PROCESS OF PRODUCTION :injection moulding

ARTICLE CONSISTS OF :----

PART1:ARTICLE-NUMBER	:	:	DESCRIPTION:
PART2:ARTICLE-NUMBER	:	:	DESCRIPTION:

PACKAGING:

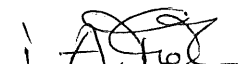
The articles are packed into PE-bags, which are closed and placed in carton boxes.
The pallets are wrapped with plastic foil.

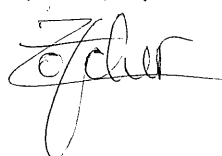
Pieces per carton: 6000 pcs. Size of carton : 589x389x330(h)mm

Cartons per pallet: 24 pcs. Size of pallet : 1200x800x2130(h)mm

REMARKS:

ENCLOSED: material-specification technical drawing

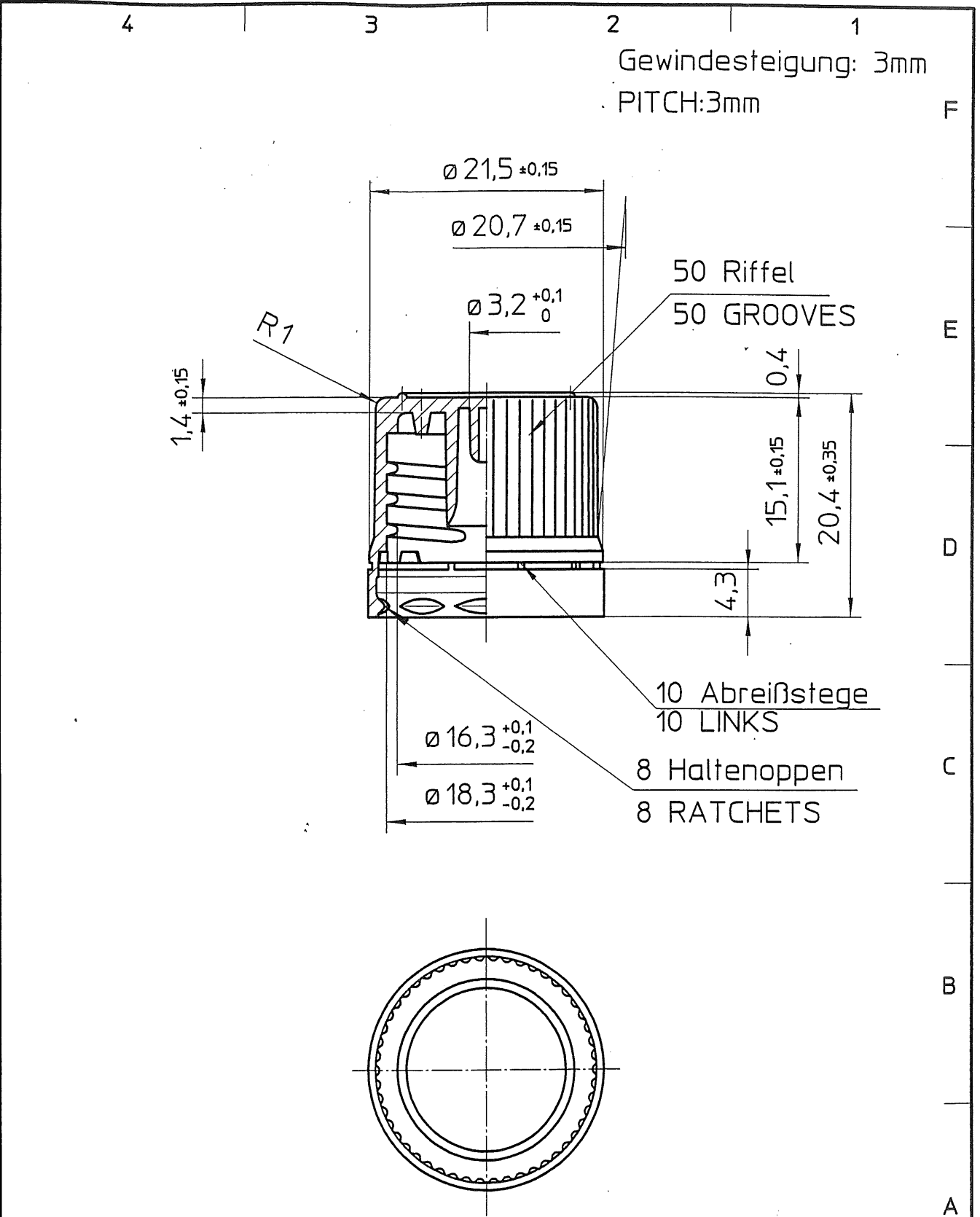
Created by :  Date: 14/03/2007

Approved by :  Date: 14/03/2007

Diese Zeichnung (Modell) ist unser Eigentum. Jede Vervielfältigung, Verwertung oder Weitergabe an 3. Personen ohne unsere ausdrückliche Zustimmung ist strafbar und wird gerichtlich verfolgt

K

Arbeitskopie - Dokument
nicht im Änderungsdienst



Material: PE
Oberfläche: matt

Name	OTTO
Datum	06.04.2006
geprüft	Huemer
Maßstab	2:1
Freimaße	m DIN ISO 2768 Teil 1
Ersatz für	Zng.v.
Ersetzt d.	
Blatt	von
Freiq.QW-L	obch. ab



KUNSTSTOFFWERK
KREMSMÜNSTER

11.150.23 Dz

DIN-Verschraubung G18 mit Originalitätsring

DIN G1 18 screw cap with tamper evidence



ARTICLE SPECIFICATION

GENERAL SPECIFICATIONS

ARTICLE - NUMBER :12.117.12 1230
DESCRIPTION :Vertical dropper for GL18
ARTICLE - WEIGHT :appr. 0,6 g
DRAWING DATED :03.05.2005
RESIN :LDPE with EP-compliance
(for example: Purell PE 1840-H)
COLOUR :transparent
PROCESS OF PRODUCTION :injection moulding

ARTICLE CONSISTS OF :---

PART1:ARTICLE-NUMBER :	DESCRIPTION:
PART2:ARTICLE-NUMBER :	DESCRIPTION:

PACKAGING:

The articles are packed into PE-bags, which are closed and placed in carton boxes.
The pallets are wrapped with plastic foil.

Pieces per carton: 20000 pcs. Size of carton : 589x389x330(h)mm

Cartons per pallet: 24 pcs. Size of pallet : 1200x800x2130(h)mm

REMARKS:

ENCLOSED: material-specification technical drawing

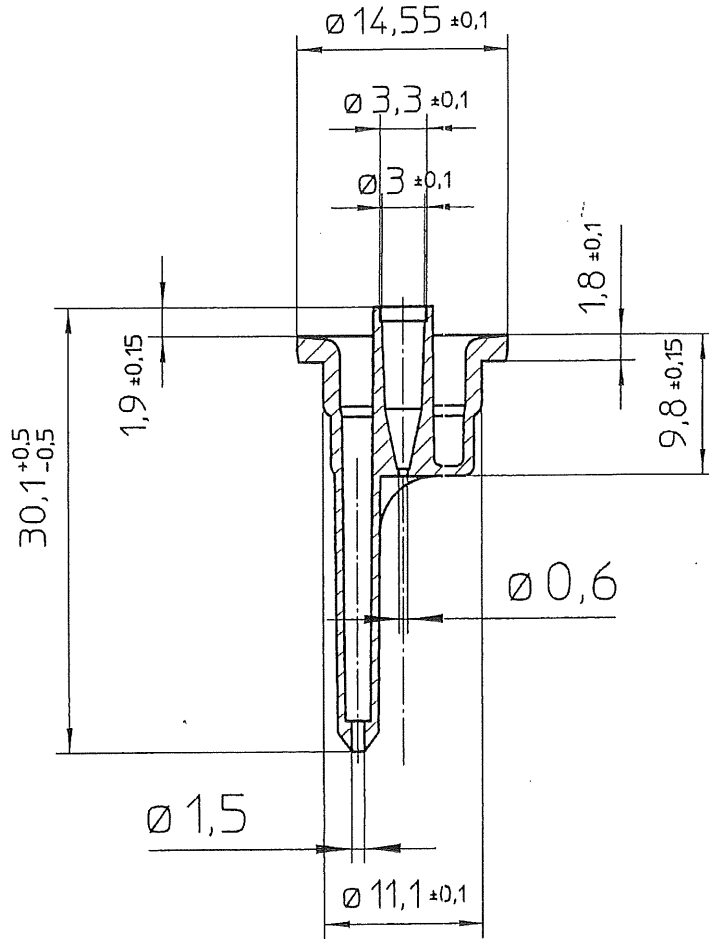
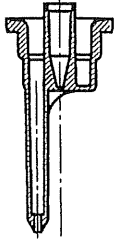
Created by : *[Signature]* Date: 27/03/2007

Approved by : *[Signature]* Date: 27/03/2007

Diese Zeichnung (Modell) ist unser Eigentum. Jede Vervielfältigung, Verwertung oder Weitergabe an 3. Personen ohne unsere ausdrückliche Zustimmung ist strafbar und wird gerichtlich verfolgt

K

M 1:1



Material: PE

Oberfläche/Surface: glatt/smooth

Name	OTTO
Datum	03.05.2005
geprüft	Huemer
Maßstab	2:1 (1:1)
Freimaße	DIN 16 901
Ersatz für	
Ersetzt d.	
Blatt	von
Freig.QW-L	04.05.2005 <i>ZH</i>



KUNSTSTOFFWERK
KREMSMÜNSTER

12.117.12 1230

Senkrechttropfer

Vertical dropper

Arbeitskopie - Dokument
nicht im Änderungsdienst

4

3

2

1

F

E

D

C

B

A