



CERTIFICATE OF ANALYSIS

PRODUCT IDENTIFICATION		COMPANY IDENTIFICATION	
PRODUCT NAME:	White Grapefruit	COMPANY:	ZAYAT AROMA INC.
BOTANICAL NAME:	Citrus x paradisi	ADDRESS:	1339 SHEFFORD, BROMONT (QC) J2L 1C9, CANADA
SYNONYM(S):		TELEPHONE:	1.855.534.1671
		FAX:	1.855.553.6010
		WEB:	WWW.ZAYATAROMA.COM
		E-MAIL:	INFO@ZAYATAROMA.COM
INCI NAME:	Citrus paradisi (grapefruit) peel oil		
CAS TSCA:	8016-20-4	HS CODE:	3301.29
CAS EINECS:	90045-43-5	EINECS:	
FEMA:	2530	COE:	140n
COUNTRY OF ORIGIN:	United States	FDA CODE:	182.2
PRODUCTION TYPE:	Conventional		
PRODUCTION METHOD:	Cold pressed		
PART DISTILLED:	Zest		
LOT NUMBER:	EAC248727US39225A		
PRODUCTION DATE:	07/25		
EXPIRATION DATE:	07/28		

PROPERTIES	SPECIFICATIONS	RESULTS
APPEARANCE	<i>Pale yellow to greenish yellow liquid</i>	<i>Complies</i>
ODOR	<i>Fresh grapefruit odor</i>	<i>Complies</i>
SOLUBILITY	<i>Insoluble in water</i>	<i>Complies</i>
SPECIFIC GRAVITY:	<i>0.838 to 0.880 @ 25°C</i>	<i>0.871</i>
OPTICAL ROTATION:	<i>+90.0 - +96.0 @ 20°C</i>	<i>Ok</i>
REFRACTIVE INDEX:	<i>1.474 - 1.478 @ 25°C</i>	<i>1.476</i>
PEROXYDE VALUE:	<i><= 15 mEq O2/KG</i>	<i>Complies</i>

DISCLAIMER

The information above is given in good faith and is believed to be accurate and represents the best information currently available to us. However, we make no warranty of merchantability or any other warranty, express or implied, with respect to such information, and we assume no liability resulting from its use. Users should make their own investigations to determine the suitability of the information for their particular purposes. In no event shall ZAYAT AROMA INC. be liable for any claims, losses, or damages of any third party or for lost profits or any special, indirect, incidental, consequential or exemplary damages, howsoever arising, even if ZAYAT AROMA INC. has been advised of the possibility of such damages. This data is not to be constructed as absolutely complete since additional data may be desirable when particular conditions or circumstances exist. This data relates only to the specific material designated and not to be used in combination with any other material. Many regulations pertain directly or indirectly to the product's end use and disposal of containers and unused material. It is the purchaser's responsibility to familiarize themselves with all applicable regulations.

CERTIFICATE OF ANALYSIS

White Grapefruit
Citrus x paradisi

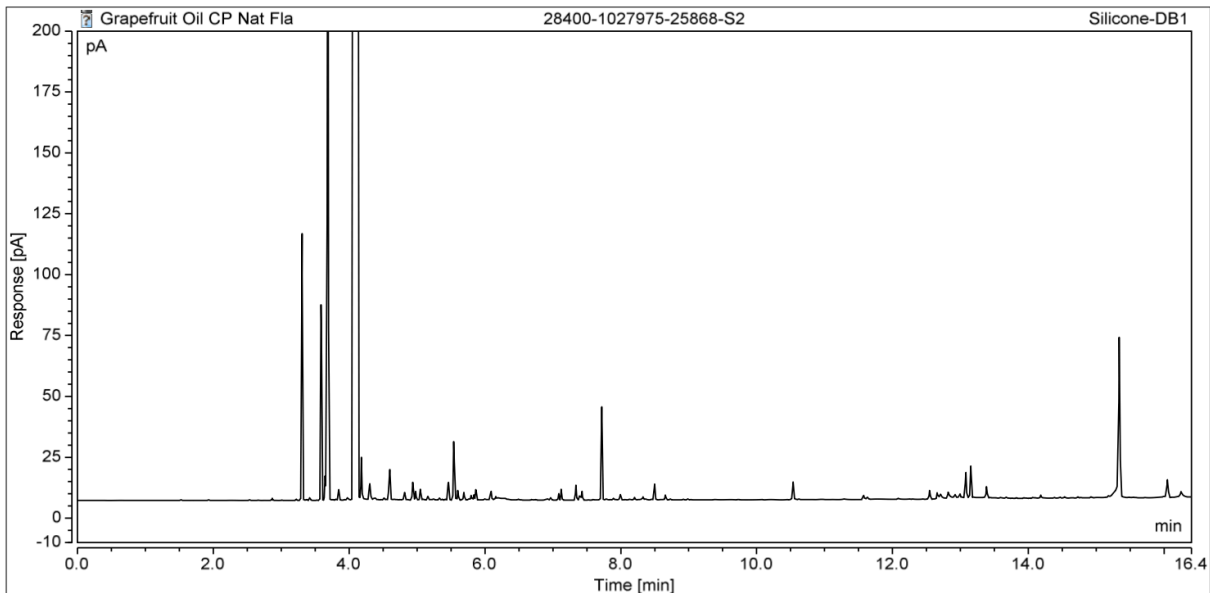
LOT: US39225A

CERTIFICATE OF ANALYSIS

% TOTAL: 0

COMPONENTS

Chromatogram



Peak Results

No.	Retention Time min	Area pA*min	GC Area %	Peak Name
1	3.308	1.629	0.56	Alpha-pinene
3	3.588	1.225	0.42	Sabinene
4	3.646	0.143	0.05	Beta-pinene
5	3.687	6.390	2.18	Octanal + Myrcene
6	3.850	0.081	0.03	Alpha-phellandrene
7	3.982	0.022	0.01	Para-cymene
8	4.121	276.897	94.63	Limonene
9	4.180	0.264	0.09	Trans-beta-ocimene
10	4.303	0.139	0.05	Gamma-terpinene
13	4.600	0.294	0.10	Nonanal + Terpinolene + Linalool
15	4.938	0.141	0.05	Cis-limonene oxide
16	4.978	0.055	0.02	Trans-limonene oxide
17	5.047	0.067	0.02	Citronellal
19	5.463	0.120	0.04	Alpha-terpineol
20	5.542	0.407	0.14	n-Decanal
25	5.838	0.035	0.01	Neral
27	6.090	0.062	0.02	Geranial
33	7.718	0.661	0.23	Beta-caryophyllene
37	8.497	0.111	0.04	Delta-cadinene
39	10.538	0.125	0.04	Nootkatone
40	11.574	0.034	0.01	Bergapten (aka 5-methoxypsoralen)
41	12.546	0.068	0.02	Osthol
48	13.080	0.192	0.07	Isoauraptene (aka 7-methoxy-8(2-oxo-3-methylbutyl) coumarin)
49	13.153	0.229	0.08	7-Methoxy-8(2-formyl-2-methylpropyl) coumarin
50	13.383	0.079	0.03	Aurapteneol
54	15.338	1.478	0.51	Auraptene (aka 7-Geranyloxycoumarin)
55	16.046	0.160	0.05	Epoxyauraptene
			99.49	

Disclaimer: The GC Profile included here gives only the percent area for each of the peaks. These are considered approximations only and are not absolute values. The values are used for comparison purposes only.

CERTIFICATE OF ANALYSIS